

OREGON CORNER RESTORATION REPORT

CORNER DESIGNATION: T1S, R25E, Z-23 / T2S, R25E, A-23

1/4 CORNER TO SECTION 36, T1S, R25E, AND SECTION 1, T2S, R25E, W.M., MORROW COUNTY, OREGON.

PREVIOUS RENEWALS / SURVEYS, ETC.:

THE TOWNSHIP LINE BETWEEN T1S & T2S, R25E WAS ORIGINALLY SURVEYED BY THOMPSON & PENGRA UNDER CONTRACT NO. 119, DATED FEBRUARY 15, 1867 IN WHICH THE NOTES READ, "SET CHARD STAKE IN RAISED MOUND AS 1/4 SEC COR".

MONUMENT AND ACCESSORIES FOUND:

NO EVIDENCE OF THE ORIGINAL CORNER COULD BE FOUND. CORNER FALLS ON THE FACE OF A SOUTHEASTERLY FACING SLOPE AND WAS COMPUTED BY AVERAGING FENCE LINE LOCATIONS THROUGH THE CENTER OF SECTION 1, T2S, R25E FOR DEPARTURE AND INTERSECTING WITH THE LATITUDINAL ARC BY HOLDING THE NORTHEAST AND NORTHWEST CORNERS OF SAID SECTION 1.

MONUMENT AND ACCESSORIES SET:

SET 2-1/2" BRASS CAP ON 1" I.D. X 30" GALVANIZED IRON PIPE WITH FLARED BOTTOM IN MOUND OF STONE, MARKED AS SHOWN IN DETAIL BELOW. ESTABLISHED 4 REFERENCE MONUMENTS AS FURTHER DESCRIBED AND DETAILED BELOW.

REFERENCES:

SET 5/8"X30" STEEL REBAR WITH PINK PLASTIC CAP MARKED "KENNY LS 89374". CORNER BEARS S 78°14'24" E, 40.00'.

SET 5/8"X30" STEEL REBAR WITH PINK PLASTIC CAP MARKED "KENNY LS 89374". CORNER BEARS N 26°50'12" W, 28.28'.

SET 5/8"X30" STEEL REBAR WITH PINK PLASTIC CAP MARKED "KENNY LS 89374". CORNER BEARS S 72°29'43" W, 33.71'.

SET 5/8"X30" STEEL REBAR WITH PINK PLASTIC CAP MARKED "KENNY LS 89374". CORNER BEARS S 06°07'17" E, 36.77'.

LOCATION / COMMENTS:

FROM LEXINGTON, OR TRAVEL APPROXIMATELY 2.0 MILES SOUTHEAST ALONG HIGHWAY 74 TO A NORTHEAST RAVINE. CORNER IS APPROXIMATELY 660' NORTHEAST OF HIGHWAY AND 150' NORTHWEST OF RAVINE.

BEARING BASE:

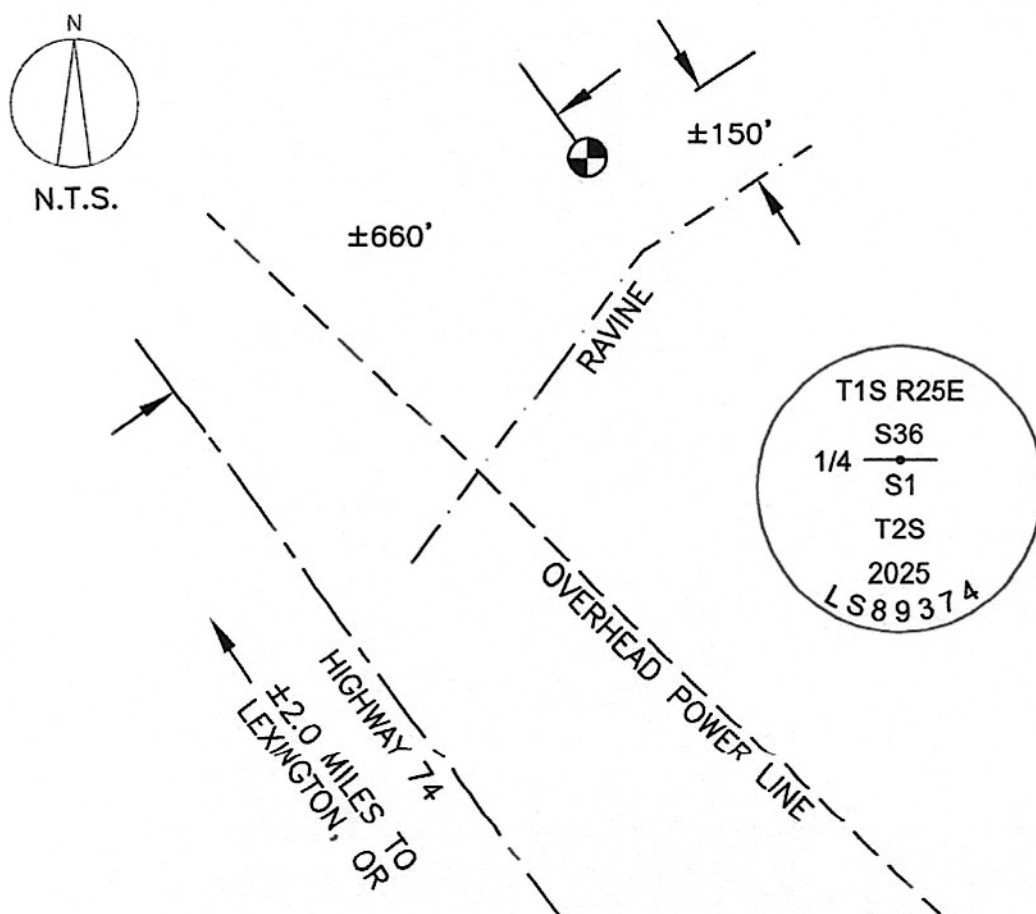
REPORTED BEARINGS ARE BASED ON PARTITION PLAT NO. 2025-05.

FIRM:

KENNY LAND SURVEYING
P.O. BOX 447 HEPPNER,
OR 97836

MARCH 12, 2025

DIAGRAM:



REGISTERED
PROFESSIONAL
LAND SURVEYOR

OREGON
JAN 12, 2016
MATTHEW PATRICK KENNY
89374PLS

RENEWS: 6-30-25

1525223/2525A23 2095