

# OREGON CORNER RESTORATION REPORT

**CORNER DESIGNATION:** T1S, R26E, A-13

NORTHWEST CORNER OF SECTION 3, TOWNSHIP 1 SOUTH, RANGE 26 EAST, W.M., MORROW COUNTY, OREGON.

**PREVIOUS RENEWALS / SURVEYS, ETC.:**

T1S, R26E WAS ORIGINALLY SUBDIVIDED BY THOMPSON & PENGRA UNDER CONTRACT NO. 119, DATED FEBRUARY 15, 1867 IN WHICH THE NOTES READ, "TO BASELINE, SET A STONE 20X10X8 AS CORNER TO SECTIONS 3 & 4".

**MONUMENT AND ACCESSORIES FOUND:**

FOUND NOTCHED 17X8X6 STONE SLIGHTLY BURIED NEAR OLD FENCE REMAINS. HELD STONE LOCATION FOR DEPARTURE AND ESTABLISHED THE TRUE CLOSING CORNER ON THE BASELINE, S 00°05'33" W, 15.15 FEET FROM FOUND STONE LOCATION.

**MONUMENT AND ACCESSORIES SET:**

SET 2-1/2" BRASS CAP ON 1" I.D. X 30" GALVANIZED IRON PIPE WITH FLARED BOTTOM IN MOUND OF STONE. ORIGINAL STONE BURIED ALONGSIDE. ESTABLISHED 4 REFERENCE MONUMENTS AS FURTHER DESCRIBED AND DETAILED BELOW.

**REFERENCES:**

- (A) LOCATION OF 17X8X6 NOTCHED STONE, NEAR REMAINS OF AN OLD FENCE. REESTABLISHED CORNER S 00°05'33" W, 15.15'.
- (B) SET 5/8"X30" STEEL REBAR WITH PINK PLASTIC CAP MARKED "KENNY LS 89374". CORNER BEARS S 04°43'56" E, 45.61'.
- (C) SET 5/8"X30" STEEL REBAR WITH PINK PLASTIC CAP MARKED "KENNY LS 89374". CORNER BEARS N 20°04'01" E, 61.56'.
- (D) SET 5/8"X30" STEEL REBAR WITH PINK PLASTIC CAP MARKED "KENNY LS 89374". CORNER BEARS N 51°39'49" W, 79.73'.
- (E) SET 5/8"X30" STEEL REBAR WITH PINK PLASTIC CAP MARKED "KENNY LS 89374". CORNER BEARS S 76°54'59" W, 33.56'.

**LOCATION / COMMENTS:**

FROM INTERSECTION OF BASELINE LN. AND CUTSFORTH RD., TRAVEL SOUTHERLY DOWN CUTSFORTH RD. FOR ±0.55 MILES. CORNER IS LOCATED ±65' EAST OF THE ROAD.

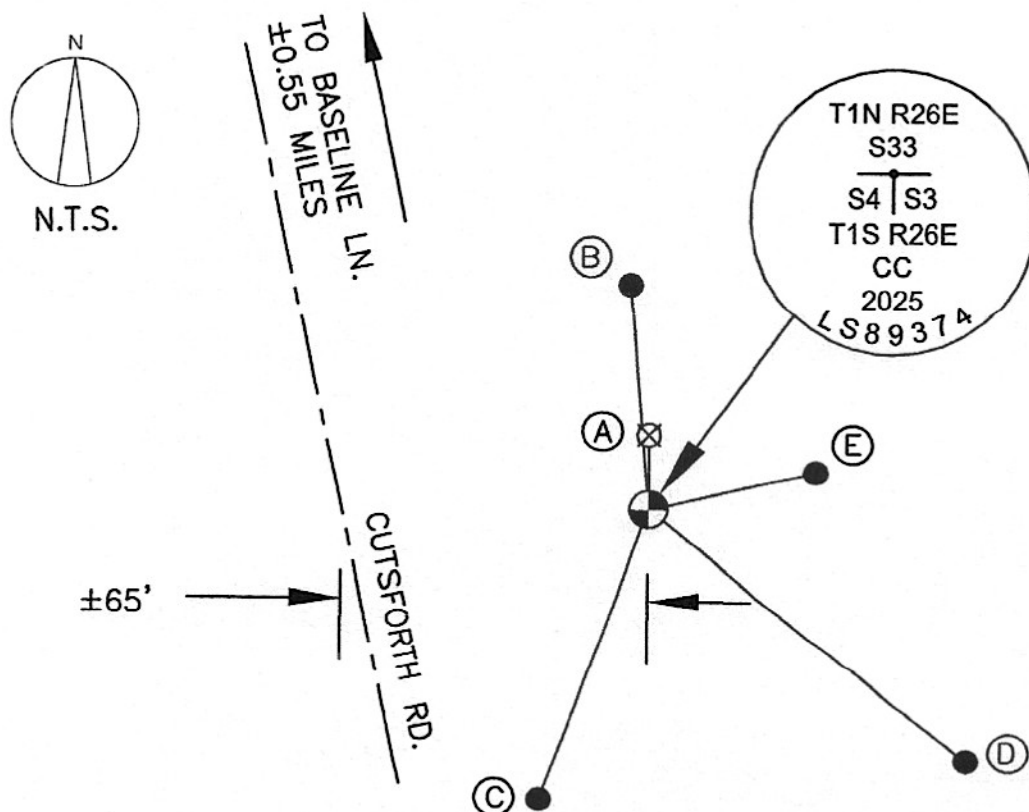
**BEARING BASE:**

REPORTED BEARINGS ARE BASED ON PARTITION PLAT NO. 2025-03.

**FIRM:**

KENNY LAND SURVEYING  
P.O. BOX 447 HEPPNER,  
OR 97836

**DIAGRAM:**



**REGISTERED  
PROFESSIONAL  
LAND SURVEYOR**

*Matthew Patrick Kenny*

OREGON  
JAN 12, 2016  
MATTHEW PATRICK KENNY  
89374PLS

RENEWS: 6-30-25

1526A13 2093