

OREGON CORNER RESTORATION REPORT

CORNER DESIGNATION: T1S, R26E, C-21

EAST 1/4 CORNER OF SECTION 2, TOWNSHIP 1 SOUTH, RANGE 26 EAST, W.M., MORROW COUNTY, OREGON.

PREVIOUS RENEWALS / SURVEYS, ETC.:

T1S, R26E WAS ORIGINALLY SUBDIVIDED BY THOMPSON & PENGRA UNDER CONTRACT NO. 119, DATED FEBRUARY 15, 1867 IN WHICH THE NOTES READ, "SET A STONE 16X12X10 INCHES AS 1/4 SECTION CORNER". SURVEY FOLDER 1114 REPORTS FINDING THIS STONE ON 8-5-1912 AND PERPETUATES ITS LOCATION BY BURYING CAST IRON PIECES BENEATH, AND SETS ANOTHER STONE (30X11X4) ALONGSIDE MARKED CS. ALSO ESTABLISHED WERE 4 REFERENCES WHICH WERE A VARIETY OF STONE COAL, ROCKS, GLASS BOTTLES, OR CAST IRON PIECES.

MONUMENT AND ACCESSORIES FOUND:

FOUND RECORD GLO STONE MARKED 1/4 NEAR THE NORTHEAST CORNER OF AN EXISTING ROCK JACK. FOUND STONE FROM FOLDER 1114 BROKEN INSIDE THE JACK AND CLEARLY MARKED CS. I WAS UNABLE TO FIND ANY OF THE REFERENCES ESTABLISHED IN FOLDER 1114.

MONUMENT AND ACCESSORIES SET:

AT THE LOCATION OF THE RECORD GLO STONE (NORTHEAST CORNER OF AN EXISTING ROCK JACK), SET 2-1/2" BRASS CAP ON 1" I.D. X 30" GALVANIZED IRON PIPE WITH FLARED BOTTOM, MARKED AS SHOWN IN DETAIL BELOW. ESTABLISHED 4 REFERENCE MONUMENTS AS FURTHER DESCRIBED AND DETAILED BELOW.

REFERENCES:

- (A) SET 5/8"X30" STEEL REBAR WITH PINK PLASTIC CAP MARKED "KENNY LS 89374". CORNER BEARS S 35°02'06" E, 40.78'.
- (B) SET 5/8"X30" STEEL REBAR WITH PINK PLASTIC CAP MARKED "KENNY LS 89374". CORNER BEARS N 46°40'31" E, 19.07'.
- (C) SET 5/8"X30" STEEL REBAR WITH PINK PLASTIC CAP MARKED "KENNY LS 89374". CORNER BEARS N 44°32'09" W, 42.89'.
- (D) SET 5/8"X30" STEEL REBAR WITH PINK PLASTIC CAP MARKED "KENNY LS 89374" AT EXISTING FENCE CORNER. CORNER BEARS S 33°43'51" W, 40.89'.

LOCATION / COMMENTS:

FROM INTERSECTION OF SAND HOLLOW RD. AND MYERS LN., TRAVEL SOUTHERLY DOWN SAND HOLLOW RD FOR ±0.57 MILES TO A FARM ACCESS ROAD. TRAVEL SOUTHWESTERLY DOWN ACCESS ROAD FOR ±0.65 MILES TO CORNER NEAR FIELD ENTRANCE.

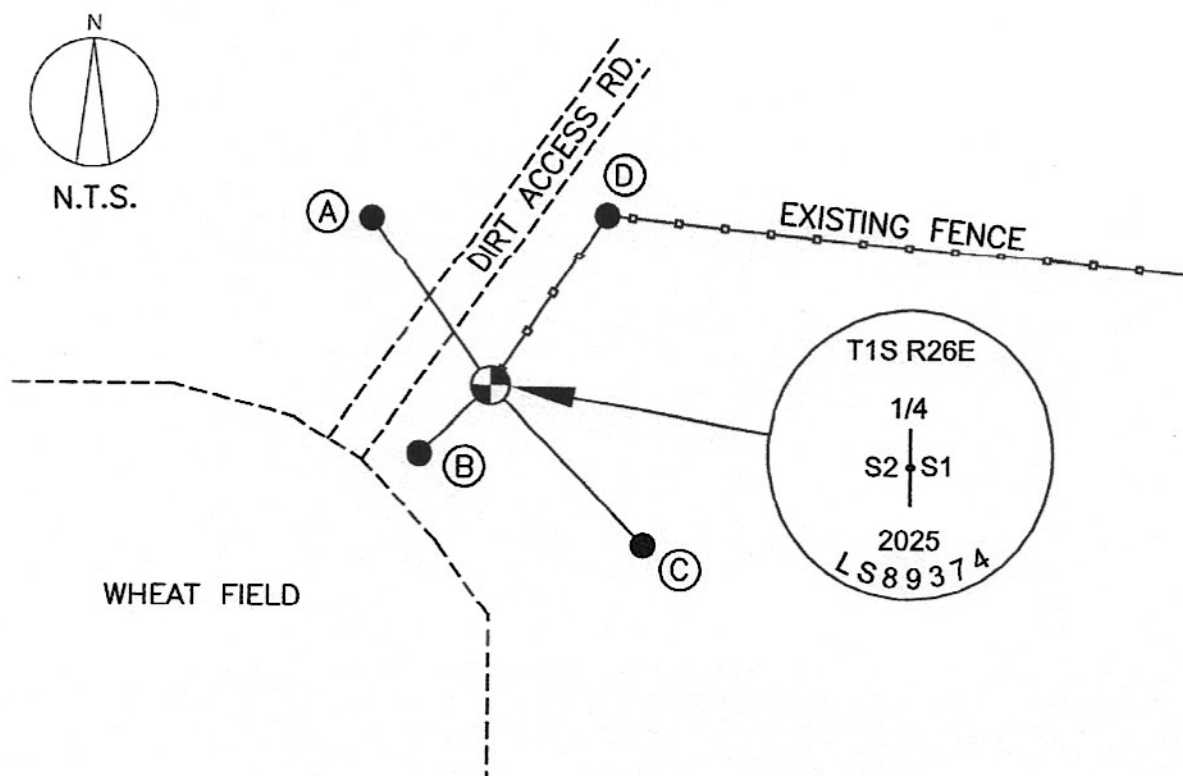
BEARING BASE:

REPORTED BEARINGS ARE BASED ON PARTITION PLAT NO. 2025-03.

FIRM:

KENNY LAND SURVEYING
P.O. BOX 447 HEPPNER,
OR 97836

DIAGRAM:



REGISTERED
PROFESSIONAL
LAND SURVEYOR

OREGON
JAN 12, 2016
MATTHEW PATRICK KENNY
89374PLS

RENEWS: 6-30-25

1526C21 2093