

OREGON CORNER RESTORATION REPORT

CORNER DESIGNATION: T2S, R25E, J-23

1/4 CORNER BETWEEN SECTIONS 12 & 13, T2S, R25E, W.M., MORROW COUNTY, OREGON.

PREVIOUS RENEWALS / SURVEYS, ETC.:

T2S, R25E WAS ORIGINALLY SUBDIVIDED BY THOMPSON & PENGRA UNDER CONTRACT NO. 119, DATED FEBRUARY 15, 1867 IN WHICH THE NOTES READ, "DROVE CHARRED STAKE AND RAISED MOUND AS 1/4 SECTION CORNER".

MONUMENT AND ACCESSORIES FOUND:

NO EVIDENCE OF THE ORIGINAL CORNER COULD BE FOUND. CORNER FALLS IN AN INACTIVE FARM FIELD JUST WEST OF A DIVERSION DITCH. HELD AVERAGE OF FENCE LINE AND BERM MEASUREMENTS THROUGH THE CENTER OF SECTIONS 12 & 13 FOR DEPARTURE AND THE LINE BETWEEN THE SOUTHEAST AND SOUTHWEST CORNERS OF SECTION 12 FOR LATITUDE.

MONUMENT AND ACCESSORIES SET:

SET 2-1/2" BRASS CAP ON 1" I.D. X 30" GALVANIZED IRON PIPE WITH FLARED BOTTOM IN MOUND OF STONE, MARKED AS SHOWN IN DETAIL BELOW. ESTABLISHED 4 REFERENCE MONUMENTS AS FURTHER DESCRIBED AND DETAILED BELOW.

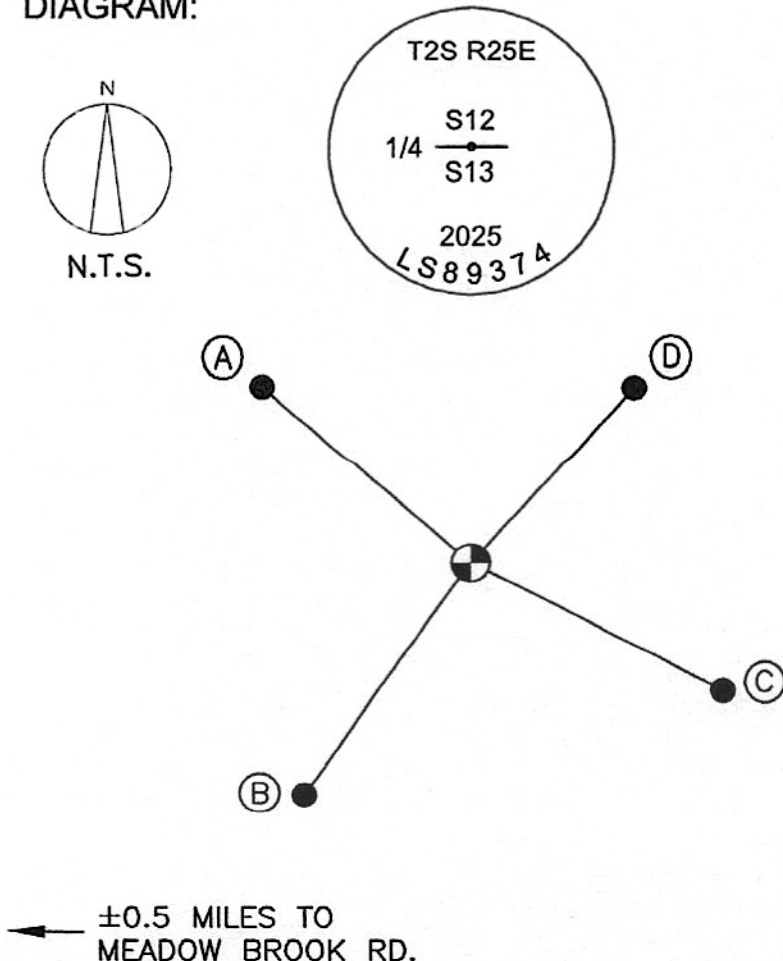
REFERENCES:

- (A) SET 5/8"X30" STEEL REBAR WITH PINK PLASTIC CAP MARKED "KENNY LS 89374". CORNER BEARS S 48°49'58" E, 54.23'.
- (B) SET 5/8"X30" STEEL REBAR WITH PINK PLASTIC CAP MARKED "KENNY LS 89374". CORNER BEARS N 36°04'35" E, 55.16'.
- (C) SET 5/8"X30" STEEL REBAR WITH PINK PLASTIC CAP MARKED "KENNY LS 89374". CORNER BEARS N 63°18'51" W, 55.29'.
- (D) SET 5/8"X30" STEEL REBAR WITH PINK PLASTIC CAP MARKED "KENNY LS 89374". CORNER BEARS S 41°54'06" W, 47.86'.

LOCATION / COMMENTS:

FROM THE INTERSECTION OF HIGHWAY 74 AND MEADOW BROOK RD, TRAVEL SOUTH DOWN MEADOW BROOK RD. FOR 2.3 MILES TO HOUSE ON WEST SIDE OF THE ROAD. CORNER IS 0.5 MILES DUE EAST IN FIELD NEAR DIVERSION DITCH.

DIAGRAM:



BEARING BASE:

REPORTED BEARINGS ARE BASED ON PARTITION PLAT NO. 2025-05.

FIRM:

KENNY LAND SURVEYING
P.O. BOX 447 HEPPNER,
OR 97836

MARCH 12, 2025

REGISTERED
PROFESSIONAL
LAND SURVEYOR

OREGON
JAN 12, 2016
MATTHEW PATRICK KENNY
89374PLS

RENEWS: 6-30-25

2525 J23 2095