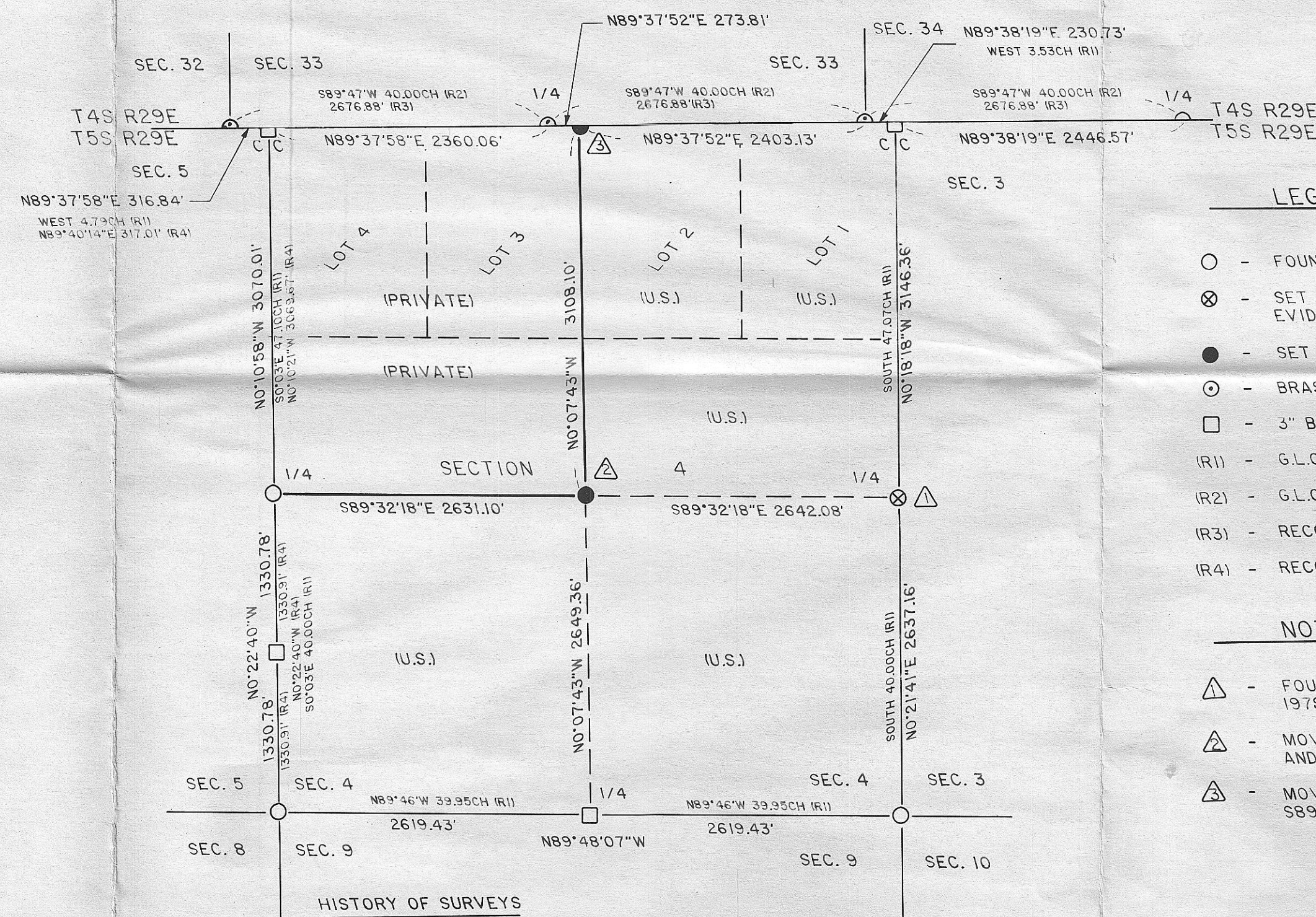


NARRATIVE OF SURVEY

THE PURPOSE OF THIS SURVEY WAS TO CORRECT THE LOCATIONS OF THE NORTH 1/4 SEC. 4, THE CENTER 1/4 SEC. 4, THE NORTH 1/4 SEC. 5, AND THE EAST 1/16 SECTION 5, T5S R29E, WHICH WERE SET IN ERROR BY THIS SURVEYOR IN 1979. THIS MAP SUPERCEDES RECORDED MAP NO. 255K, STAMPED BY THIS SURVEYOR IN 1979, WITH RESPECT TO SECTIONS 4 AND 5.

DURING THE CORRECTIVE WORK THIS SURVEYOR SEARCHED FOR ORIGINAL CORNER EVIDENCE AT THE NE COR., NW COR., E 1/4, AND S 1/4 OF SECTION 4. ORIGINAL EVIDENCE FOR THE E 1/4 OF SEC. 4, WHICH WAS NOT DISCOVERED BY FIELD CREWS IN 1979, WAS RECOVERED. THIS PLAT SHOWS THE CORRECTED CORNER POSITIONS FOR SECTION 4. WHERE REQUIRED, THE 1979 MONUMENTS WERE MOVED TO THEIR PRESENT POSITIONS, SEE NOTES 1, 2 AND 3. ALSO, THE MONUMENTS FOR THE NORTH 1/4 AND EAST 1/16 OF SECTION 5 WERE REMOVED. NEW CORNER CERTIFICATES WERE PREPARED FOR THE THREE CORNERS INDICATED IN NOTES 1, 2 AND 3. MEASUREMENTS WERE MADE WITH T-16 THEODOLITE AND STEEL TAPE, FROM TRAVERSE CONTROL REMAINING FROM THE 1979 SURVEY.



LEGEND

- - FOUND STANDARD BLM MONUMENT SET FROM ORIGINAL EVIDENCE.
- ⊗ - SET 3" BRASS CAP ON 2 1/2" G.I.P. FROM EXISTING EVIDENCE ON THIS SURVEY.
- - SET 3" BRASS CAP ON 2 1/2" G.I.P. ON THIS SURVEY.
- ⊙ - BRASS CAP ON G.I.P. BY PLS 644, 1975.
- - 3" BRASS CAP ON 2 1/2" G.I.P. FROM 1979 SURVEY, BY PLS 1106.
- (R1) - G.L.O. RECORD BY FRANK CAMPBELL (1883).
- (R2) - G.L.O. RECORD BY SANDERSON (1882).
- (R3) - RECORD DISTANCE BY PLS 644 (1975).
- (R4) - RECORD BY PROFESSIONAL CONSULTANTS, INC. (1986).

NOTES

- △ - FOUND ORIGINAL CORNER EVIDENCE ON THIS SURVEY. MOVED 1979 MONUMENT S38°52'E 25.43' AND PLACED IN PRESENT POSITION.
- △ - MOVED W.C. FOR C 1/4 SET IN 1979 S30°34'30"W 9.05' AND PLACED IN PRESENT POSITION.
- △ - MOVED MONUMENT FOR N 1/4 SEC. 4, SET IN 1979, S89°37'52"W 9.70' AND PLACED IN PRESENT POSITION.

HISTORY OF SURVEYS

TOWNSHIP LINE ESTABLISHED BY E.W. SANDERSON, C.N. 417, IN 1882.

T5S R29E SUBDIVIDED BY FRANK CAMPBELL, C.N. 468, IN 1883.

CORNERS REESTABLISHED ON TOWNSHIP LINE BY GRIFFITH, PLS 644, IN 1975.

CLOSING CORNERS AND SECTION BREAKDOWN OF SEC. 4, T5S R29E, BY WELLS, PLS 1106 IN 1979.

SUBDIVISION OF SECTION 5, T5S R29E, BY HANSON, PLS 1058, IN 1986.

RECORD OF SURVEY PLAT FOR UMATILLA NATIONAL FOREST

OF SECTION 4, TWP 5 S, RGE 29E, WM.
MORROW COUNTY, OREGON.

SURVEYED BY: WILLIAM R. WELLS
P.O. BOX 1696, PENDLETON, OR
PHONE: 276-6362

DATE: MAY 25, 1987.

William R. Wells

WILLIAM R. WELLS

C-862-K-535

11/87
D.H.K.
C 862K
DE