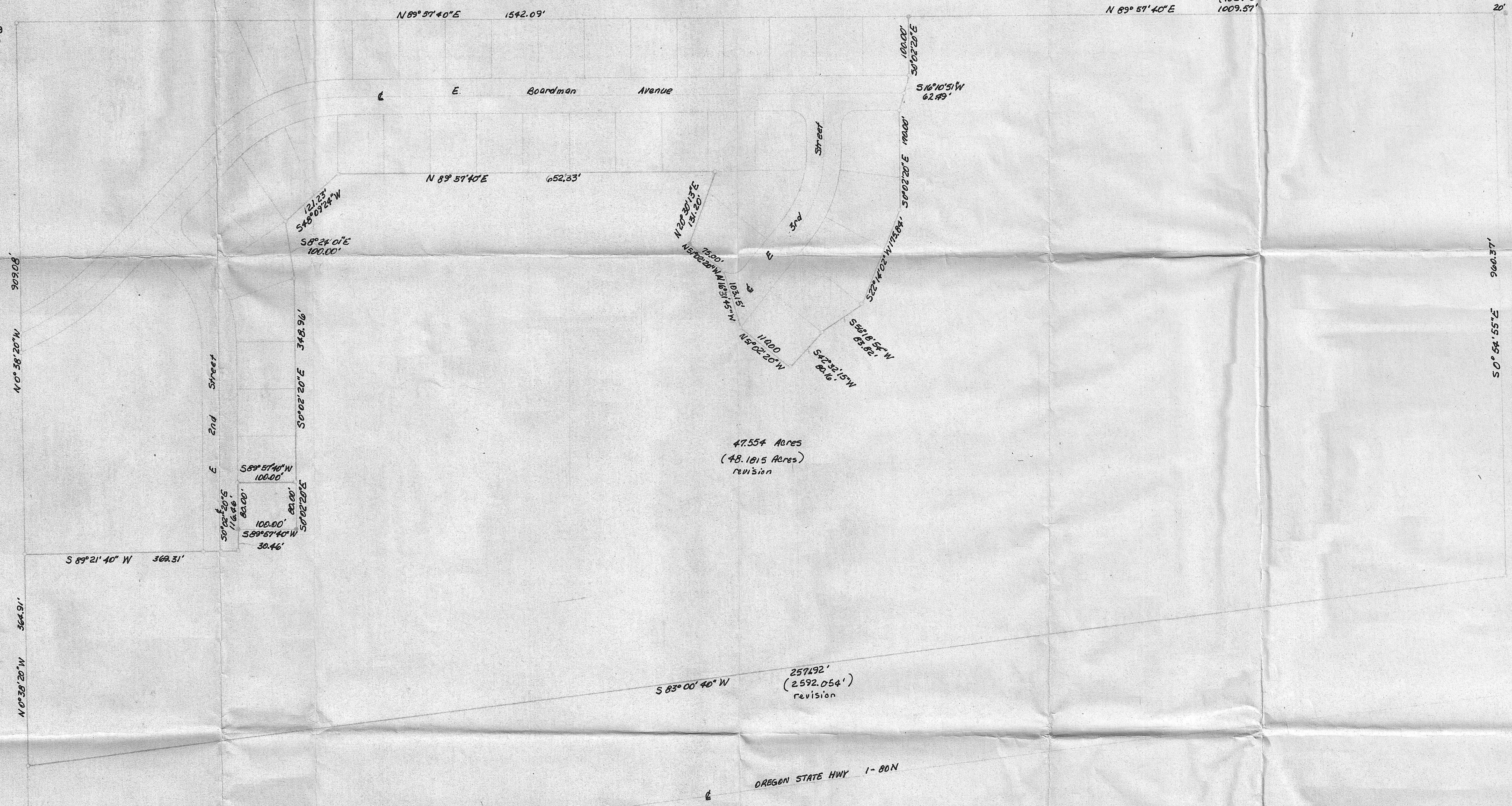


RECEIVED BY
 Morrow County Surveyor
 Date 1-8-79
 Rec'd By S. Barth
 No. 181-K

Center Sec. 9
 and 10' 1" Pin

Revised
 (1029.57')
 1009.57'

20' E 1/4 Cor. Sec. 9
 and Brass screw & washer



47.55± Acres
 (48.10± Acres)
 Revision

2574.92'
 (2592.054')
 revision

○ Round 3/8" Pin
 ● set 3/8" Pin

3/4 Cor. Sec. 9
 and Brass screw & washer

60 Cor. Sec. 9
 and Brass screw & washer

REGISTERED
 PROFESSIONAL
 LAND SURVEYOR
David H. Hansen
 OREGON
 LAND SURVEYOR
 201

Revised 15 Jan. 1979 MH ()

K KRUMBEIN ENGINEERING CO
 ENGINEERS - SURVEYORS - PLANNERS
 221 S. Main, Pendleton, Oregon

Survey for
GEORGE HANSEN
 Parcel in SE 1/4 Sec. 9, T4N, R25E, W4E

SCALE
 1" = 200'
 DATE
 1-5-79
 DRAWN BY
 JAH
 CHECKED BY
 DHH
 DRAWING NO.
 79-10