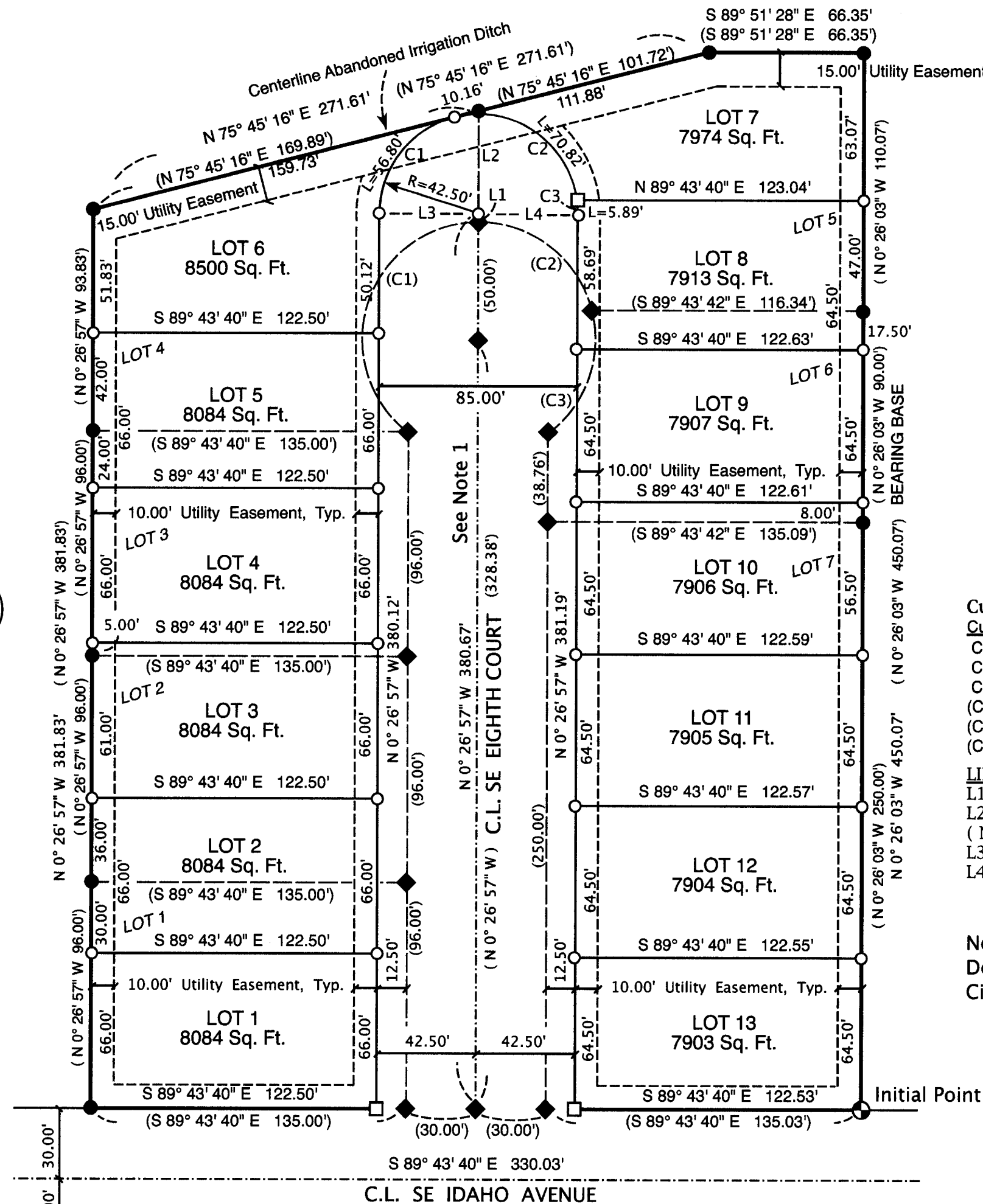


CURLOO ESTATES

A Replat of Lots 1-7 of Eighth Court Development
A Subdivision Located in the City, of Irrigon,
Morrow County, Oregon
Township 5 North, Range 27, East of the Willamette Meridian,
Section 19, Southwest 1/4 of Southwest 1/4

for:
The City of Irrigon
500 NE Main Avenue
Irrigon, Oregon 97844



I do hereby certify that this is a true and exact
copy of the Original Subdivision Plat as filed for
The City of Irrigon, in Morrow County
Ronald V. McKinnis PLS #2431

SURVEYOR'S NARRATIVE:

This survey is based on a survey by Edwards for the City of Irrigon, County Survey No. 1519-C as found in the survey records of Morrow County. I found corners set by Edwards for the Eighth Court Development as shown. I held the exterior pins of Edwards previous survey and also held his East line of the subdivision as my Bearing base. I set pins as shown at all lot corners. I noted monuments that were found and then removed by road & utility construction, and also noted the found monument set by Edwards at the Southeast Corner of the Eighth Court Development Plat as the Initial Point. This Survey was completed using a GPS Total Station.

SURVEYOR'S CERTIFICATE:

I, Ronald V. McKinnis, being a Registered Professional Land Surveyor of the State of Oregon, certify that I have correctly surveyed and monumented the lands portrayed on the face of this plat, and more particularly described in the Legal Description hereon. I also certify that this plat complies with all provisions of Chapter 92 of the Oregon Revised Statutes. The Initial Point of this survey was Edwards' Monument for the Southeast Corner of the Eighth Court Development (C.S. #1519-C) consistent with requirements of the monumentation of the Initial Point.

PROPERTY DESCRIPTION:

The property being subdivided is described in the Morrow County Deed Records Microfilm 2006-16709: Originally Lots 12-20, Block 45 & Lots 27-35, Block 46, Plat of Irrigon. That Description was then Platted as: Lots 1 through 7 of Eighth Court Development, a Subdivision in the City of Irrigon for the City of Irrigon.

DECLARATION / DEDICATION:

We, the undersigned owners of Curloo Estates as shown on this plat, do hereby dedicate the Easements for the uses as shown on this Plat. We also dedicate 'Eighth Court' to the Public for Access, Egress, & Utilities. We also acknowledge that we have authorized this Plat to be prepared in accordance with the provisions of ORS Chapter 92, that we have caused this plat to be created, and that we recognize this Plat as the Official Plat and Map of the Subdivision known as 'Curloo Estates' as filed in Morrow County and the State of Oregon. The City of Irrigon hereby accepts the Dedication of 'Eighth Court' as a Public City Street.

[Signature] City of Irrigon, Mayor
[Signature] City of Irrigon, City Manager

On this 12th day of November, 2021, the above individuals appeared personally before me and are known to me to be the identical individuals who executed the plat dedication and acknowledged that they did so freely and voluntarily of their own will.

Before me: *[Signature]*
Notary Public for State of Oregon
My Printed Name: Jessica Jo Evans
My Commission No. 974624
My Commission Expires May 29, 2022

Curve	Arc Length	Radius	Δ Angle	CD Bearing	CD Distance
C1	56.80'	42.50'	76° 34' 41"	N 37° 50' 09" E	52.67'
C2	70.82'	42.50'	95° 28' 20"	S 56° 08' 09" E	62.90'
C3	5.89'	42.50'	95° 28' 20"	S 04° 25' 23" E	5.89'
(C1)	124.91'	50.00'	143° 08' 01"	N 17° 59' 03" E	94.87'
(C2)	67.44'	50.00'	77° 16' 58"	S 51° 48' 28" E	62.44'
(C3)	57.47'	50.00'	65° 51' 02"	S 19° 45' 32" E	54.36'

LINE TABLE	
L1 - N 0° 26' 57" W	2.28'
L2 - N 0° 26' 57" W	43.76'
(N 0° 26' 57" W	46.04')
L3 - N 89° 33' 03" E	42.50'
L4 - N 89° 33' 03" E	42.50'

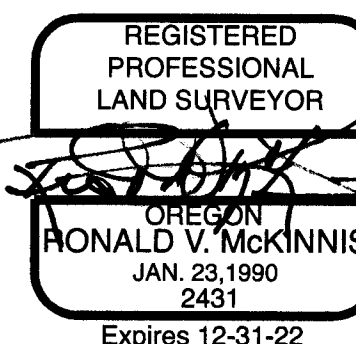
Note 1: SE Eighth Court of Subdivision Eighth Court Development, Vacated by Ordinance 253-21, City of Irrigon, Morrow County, Oregon.

LEGEND

- SET MONUMENTS - 5/8" x 30" Iron Rods W/ Plastic Caps Stamped - PLS # 2431
- SET MONUMENTS - PK in Concrete W/ Washer Stamped - PLS # 2431
- Found Monument - Edwards, 1519-C, Eighth Court Development, Or As Noted
- ◆ Monuments Removed by Street Construction Edwards, PLS 951, Eighth Court Development
- ⊙ INITIAL POINT, Found 5/8" Rebar W/ Yellow Plastic Cap, PLS 951 for 1519-C
- ⊙ CALCULATED POINT - Not Set
- SUBDIVISION BOUNDARIES
- (000) Record Bearing and Distance, 1519-C

RECEIVED BY
Morrow County Surveyor

Date: 11-24-2021
Rec'd By: MPK
No.: 2021-1973C
Folder No.: 1973



50 25 0 50

SCALE 1" = 50 Ft.
February, 2021



APPROVALS:

I certify that I have examined and approved this Subdivision Plat on
23 day of Nov., 2021

[Signature]
Morrow County Surveyor

I certify that I have examined and approved this Subdivision Plat on
12th day of November, 2021

[Signature]
Irrigon City Manager

I certify that I have examined and approved this Subdivision Plat on
24 day of November, 2021

[Signature]
Morrow County Tax Assessor
Morrow County Tax Collector

Morrow County Board of Commissioners
We hereby approve this Plat for
Recording in the Morrow County
Subdivision Records

24th day of November, 2021

[Signature]
Morrow County Commissioner

[Signature]
Morrow County Commissioner

[Signature]
Morrow County Commissioner

Morrow County Clerk
Recording Information
SEAL

MORROW COUNTY, OREGON 2021-50270
PLAT-SUB 11/24/2021 11:15:20 AM
Cnt=1 Sln=23 KB \$5.00 \$130.00 \$100.00 \$300.00 \$776.00



I, Bobbi Childers, County Clerk for Morrow County, Oregon, certify that the instrument identified herein was recorded in the Clerk records.
Bobbi Childers - County Clerk



1973