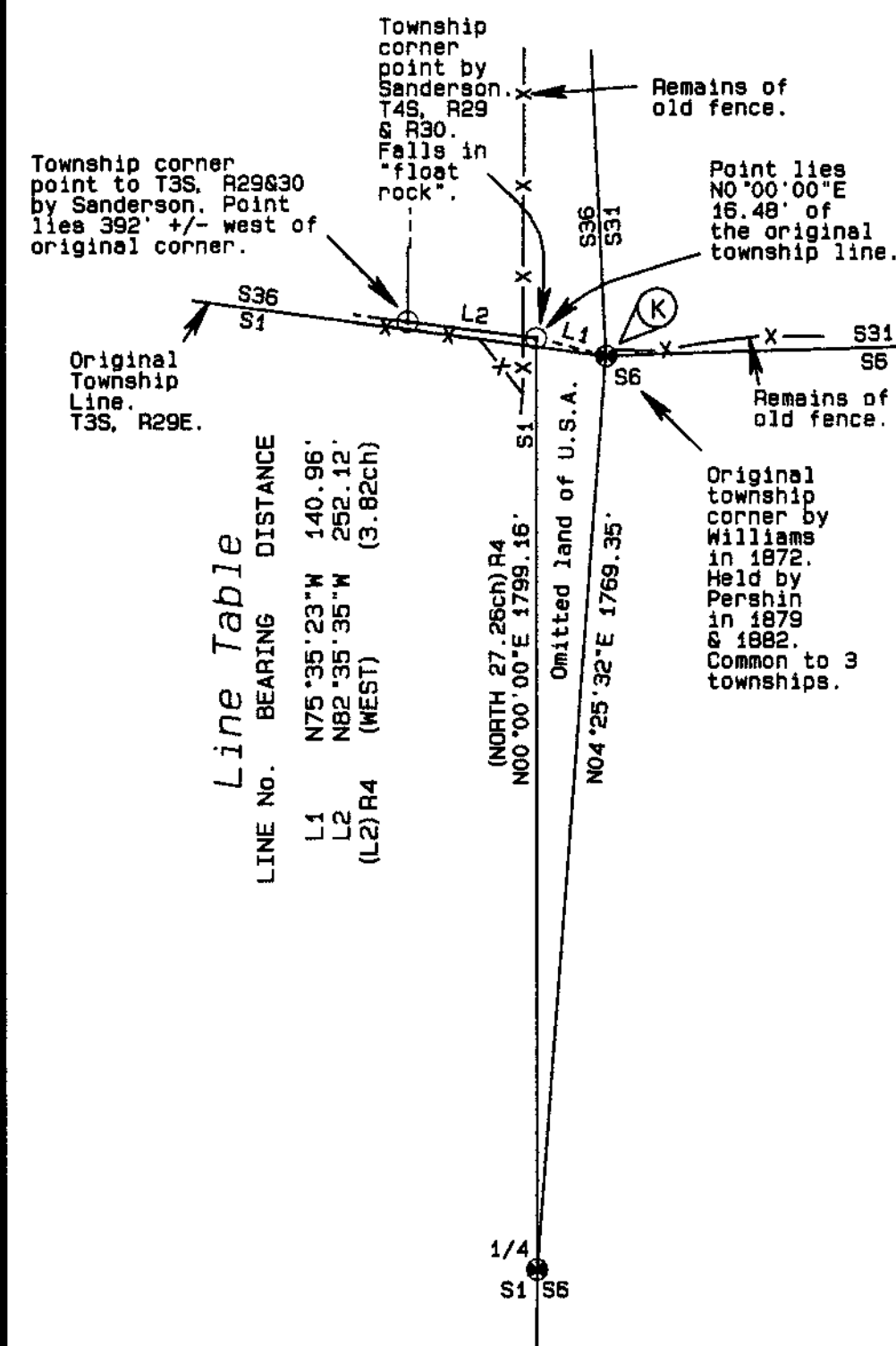


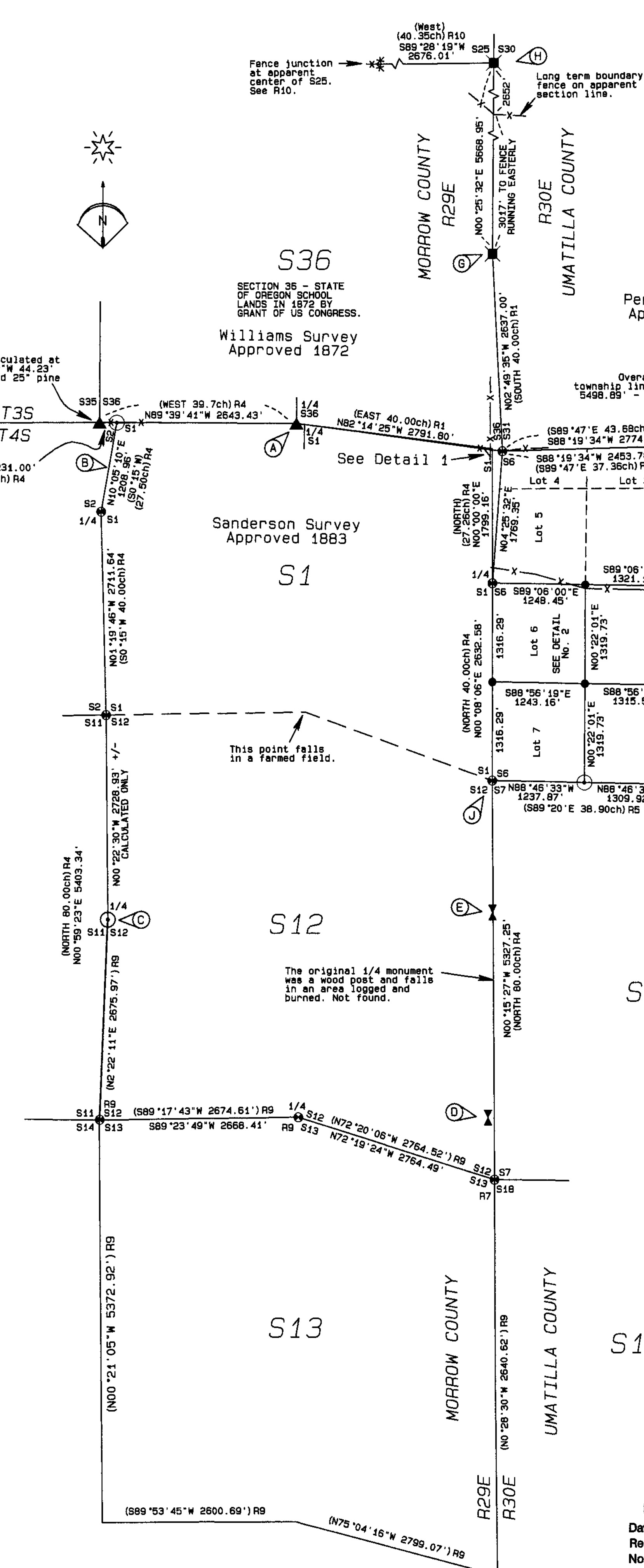
# DETAIL 1

SHOWING MULTIPLE TOWNSHIP CORNERS N. T. S.



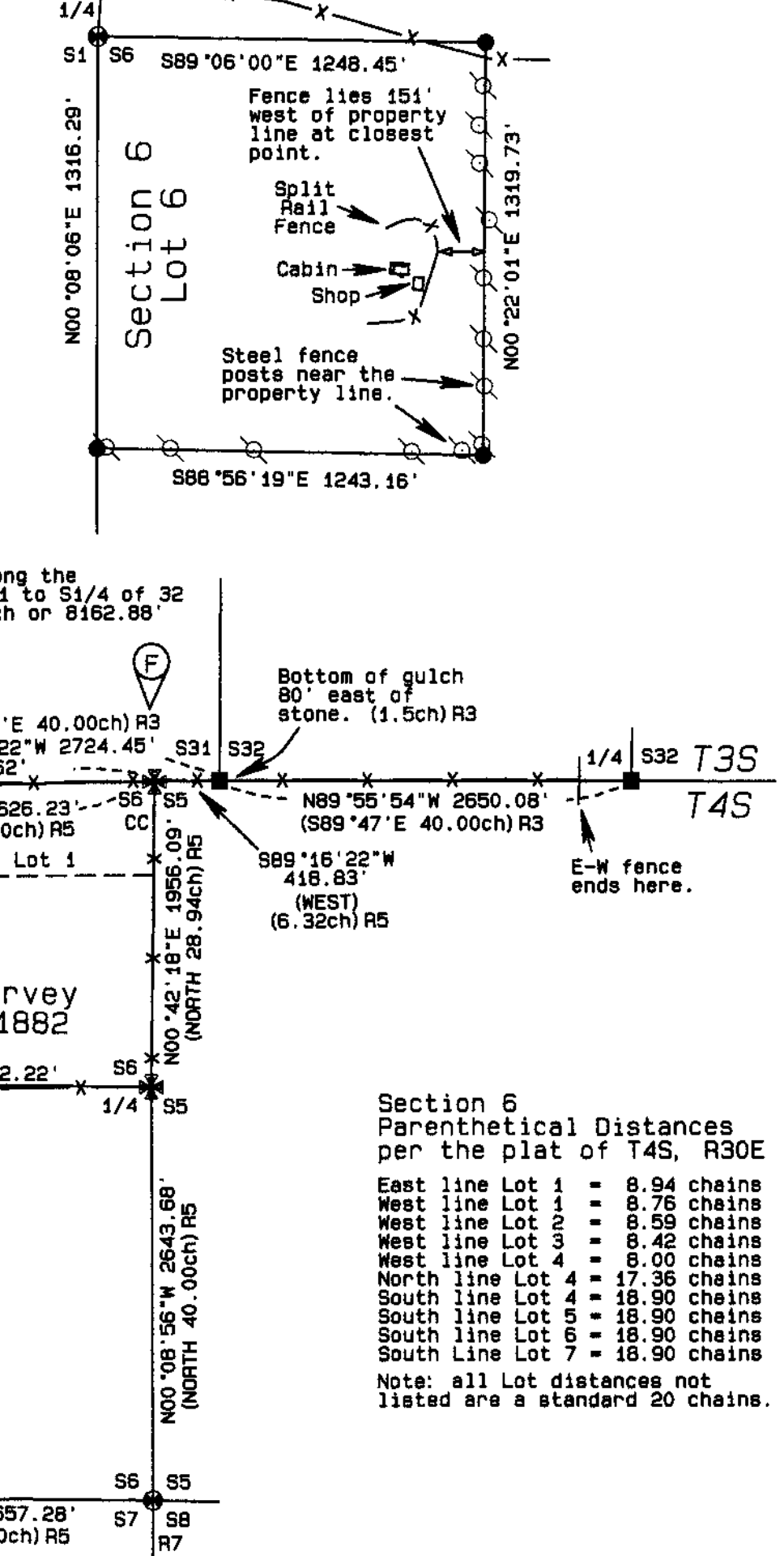
## LEGEND

- FOUND 2 1/4" BRASS CAP ON A GALVANIZED IRON PIPE SET BY GAYLORD UNLESS NOTED OTHERWISE. SEE R11 & R12
- SET A 5/8" x 24" IRON REBAR W/ A 1/8" ORANGE PLASTIC CAP STAMPED WTS AND 56295LS
- HELD FENCE CORNER MATCHING LOCATION BY SURVEY R6
- FOUND ORIGINAL GLO STONE SEE FILED CERTIFICATE
- CORNER POINT CALCULATED USING GLO RECORD TIE FROM BEARING TREE
- FOUND MOUND OF STONE NO MARKED STONE IDENTIFIED POSSIBLE GLO CORNER
- FOUND STUMP SCRIBED AS BT ORIGIN UNKNOWN
- COMPUTED POINT
- SEE SURVEY NOTES
- R1 GLO CONTRACT No. 175 DATED JULY 20, 1872 BY GEORGE WILLIAMS
- R2 GLO CONTRACT No. 304 DATED SEPTEMBER 15, 1878 BY GEORGE S. PERSHIN
- R3 GLO CONTRACT No. 332 DATED JULY 29, 1879 BY GEORGE S. PERSHIN
- R4 GLO CONTRACT No. 417 DATED AUGUST 24, 1881 BY EDWARD W. SANDERSON
- R5 GLO CONTRACT No. 430 DATED MARCH 23, 1882 BY GEORGE S. PERSHIN
- R6 UMATILLA COUNTY RECORD OF PRIVATE SURVEYS BOOK 1, PAGE 407
- R7 1978 BLM REMONUMENTATION SURVEY UNDER SPECIAL INSTRUCTIONS DATED MAY 3, 1987 BY CRAIG L. WANLESS
- R8 MORROW COUNTY SURVEY FOLDER 883
- R9 UMATILLA COUNTY SURVEY 92-002-B, SAME AS MORROW COUNTY SURVEY FOLDER 453
- R10 UMATILLA COUNTY RECORD OF PRIVATE SURVEYS BOOK 1, PAGE 430
- R11 MORROW COUNTY CORNER CERTIFICATES 3529223, 4529C21, 4529E21, 4529G21, 4529J21
- R12 UMATILLA COUNTY CORNER CERTIFICATES 353021, 3530C1, 4530C1, 4530E1



# DETAIL 2

SCALE 1"=500'



## SURVEY NOTES

- The point for the south 1/4 of Section 36 shown on this map was calculated by Williams in 1872. The brass cap set in 2000 by Gaylord bears N75°35'23"W 140.96' from the corner point shown on this map. This situation was confirmed by redundant observations. The position of the original NE BT stump should be reviewed before the true corner point is monumented.
- It does not appear that Mr. Sanderson actually closed on the township line. This line is 606' +/- short of the record length which is the same situation that exists in section 6 of T4S, R29E as reported in Morrow County survey folder 883.
- This brass cap was visited but not tied due to the heavy timber canopy. The position shown hereon was calculated from survey data for the purpose of showing an approximate tie between the W1/4 and NW corner of Section 12.
- Found a 15' +/- tall "barber chaired" buckskin snag with a face toward the NE corner of Section 12. This snag is approximately 30' from the NW corner of Section 12. Origin unknown.
- Found a 7' +/- tall 32" DBH Ponderosa pine stump with a face toward the NE corner of Section 12. The stump has a location marker marked with the name "Miller" and the date 11/30/49. The stump lies S0°03'35"E 1756.74 feet from the NE corner of Section 12. Origin unknown.
- The original closing corner was a post in a mound of stone. I held the fence corner as the best available evidence of the original point. This point lies 9.00 feet north of the township line. Distances given on this map are to the true closing line - township line intersection.
- I found a stone mound 3' x 1.5' with a stone 14x10x9 set vertically but loose in the center of the mound. There was pink surveyor's flagging under the stone. The stone is unmarked.
- I found a stone mound 2.5' x 1'. The unmarked stone set in the center of the mound is 12x9x6. The record size was 18x9x4. Section 25 was surveyed in March of 1880 and reported finding the original corner at this point. This mound agrees well with the existing fence lines in the area.
- The original northeast bearing tree was cut down leaving a 6" high stump during second week of February, 2022. Also, the original northwest bearing tree stump was destroyed by logging the same week. The log from the northeast bearing tree has since been removed.
- The original stone set in 1872 is at the base of the brass cap in the mound rebuilt by Gaylord. I find the stone to be 20x10x6 inches and notched on four edges. One edge broken with a broken nail. The stone is unmarked. I left the stone where Gaylord placed it when he remonumented the corner.

## BASIS OF BEARINGS

MEASURED BEARINGS SHOWN ON THIS MAP ARE BASED ON GPS OBSERVED NAD83 (OREGON NORTH) BEARINGS ROTATED 0°57'55" CLOCKWISE TO TRUE BEARINGS. DISTANCES ARE GRID DISTANCES SCALED BY THE COMBINED SCALE FACTOR OF 0.9997014815 TO OBTAIN GROUND DISTANCES.

RECEIVED BY  
Morrow County Surveyor  
Date: 8-11-2022  
Rec'd By: MPK  
No.: 2022-2001D  
Folder No.: 2001

REGISTERED  
PROFESSIONAL  
LAND SURVEYOR  
Stephen K. Haddock  
OREGON  
JULY 9, 2001  
STEPHEN K. HADDOCK  
56295LS  
RENEWS 6-30-23

## NARRATIVE OF SURVEY

This survey was performed at the request of Mr. Randy Raschein Jr. The purpose of the survey was to determine the location of Government Lot 6 in Section 6 as shown hereon and to map the location of the existing split rail fence, house, and shop in relation to the east line of said Lot 6.

HISTORY: Township 3 South, Range 29 East was surveyed in September of 1872 by U.S. Deputy Surveyor George Williams. The southeast corner of the township was set by running the south line of the township from west to east. Section 36 of that township was automatically transferred to the State of Oregon upon recording of the plat. The State subsequently sold the majority of Section 36 to William and Mary Rust in July of 1889. In September of 1878 Deputy Surveyor George Pershin surveyed the south line of Township 3 South, Range 30 East holding the Williams corner at the southeast of T3SR29 and surveying east. In September of 1879, Deputy Pershin began his contract to subdivide Township 3 South, Range 30. In the process he discovered a "material error" in his 1878 work on the south line of T3SR30 so resurveyed that south line. Mr. Pershin's notes state the source of the "error" was due to the west line of T3S, R30E not being a due north-south line. In resurveying this township line Deputy Pershin again held the Williams SE corner of T3SR29 and surveyed east setting corners cited in the notes as common to both Townships 3 and 4 South, Range 30. Deputy Surveyor Edward Sanderson received a contract to survey the south and east lines and subdivisions of T4SR29 in August of 1881. Sanderson's notes indicate that he completed his survey of the township line common to T4S, Ranges 29 and 30 on June 8th, 1882. This was just 12 days prior to Deputy Pershin completing the subdivision of T4SR30. Pershin's notes give the date he completed the survey of Section 6, T4SR30 as June 20th, 1882. Deputy Pershin's notes for T4SR30 were approved August 12th and his plat approved March 28th, 1882. Deputy Sanderson's notes of the survey of T4SR29 were approved January 30th and his plat approved on March 5th, 1883.

Record surveys done after the completion of the original GLO surveys include the subdivision of Section 5, T4S, R30E in June of 1899 and the subdivision of Section 25, T3S, R29E, in March of 1900, both by County Surveyor John Kimbrell. In 1978, BLM Cadastral Surveyor Craig L. Wanless searched for and remonumented certain corner points in Township 4 South, Ranges 29 & 30 East in support of the land line location program for the United States Forest Service. That work included the "search" for the "error" in the township line location. In the summer of 1981, that same Craig L. Wanless performed a land line location survey for the U.S. Forest Service, a part of which is shown in Sections 12 and 13 on this survey. In the year 2000, Mr. Dennis Gaylord, PLS, performed multiple corner remonumentations in this area.

DISCUSSION: In order to properly locate Government Lot 6 of Section 6 as shown hereon, it was necessary to establish the location of the protracted north 1/4 corner of the section. This made it necessary to resolve the question surrounding the true northwest corner of Section 6. The northwest corner of Section 6 was originally established in 1872 as the common corner to Townships 3 and 4 South, Ranges 29 and 30 East. This corner was found and held to be common to all four townships by Deputy Pershin in 1878 and 1879 during his surveys of Township 3 South, Range 30. In June of 1882, Deputy Surveyor Edward Sanderson was surveying the township line common to Townships 4 South, Ranges 29 and 30. Deputy Sanderson reported being unable to find the corner to Townships 3 South, Ranges 29 & 30 East. At this time Deputy Sanderson did not search the township lines to the east or west but instead went to the northeast corner of Section 31, T3S, R30 and measured west from that corner 80 chains. This distance was 3.55 chains less than Pershin's second length for the north line of Section 31 making his search location 3.55 chains to the far west. Mr. Sanderson did not find the section corner to Sections 30 and 31, T3S, R30. From this point Deputy Sanderson measured south 40 chains and reported finding the "1/4 Section corner" which he identified as a stone 20x12x10 inches. (The original record 1/4 corner monument on the township line was a stone 13x7x6). From this point Deputy Sanderson measured south an additional 40 chains and set a stone 20x8x8 at what he called the "old corner to T. 3 S. Rgs 29 and 30 E." which he marked with notches on all four sides. He then proceeded to complete his survey of the township line between T4S, Ranges 29 & 30 and set a stone 16x10x7 for the terminal corner of that line. The setting of these new corners and the timing of the completion of the Pershin and Sanderson surveys apparently caused some confusion for the GLO draftsman. The Pershin Plat of T4S, R30 was approved on August 28th, 1882 and shows the Range line between T3S, Ranges 29 & 30 East lying some unstated distance east of the Range line to T4S, R29 & 30. The Sanderson Plat approved on March 5th, 1883 shows that situation reversed with the Range line to T3S, Ranges 29 & 30 lying 3.82 chains west of the range line to T4S, Ranges 29 & 30. This may also be due to Sanderson's notes of the extensions of T4S, R29E which state "Cor. of T.3.S., Rgs 29 and 30 E. is 362 lks W. of stone Cor. to T. 3 S. Rgs. 29 and 30 E."

In the year 2000, the original corner common to townships 3 and 4 South, Ranges 29 and 30 East (set by Williams in 1872) was recovered and remonumented by Mr. Dennis Gaylord, PLS. Mr. Gaylord accepted this corner based on the original stone with its markings and mound and its relation by measurement to the original south 1/4 corner of S31 set by Pershin in 1879 and the original 1/4 corner of sections 1 and 6 set by Sanderson in 1882. The tie to the 1/4 of sections 1 and 6 is not a conclusive proof because Sanderson did not find (and thus has no record tie to) the 1872 Williams Township corner. When Mr. Gaylord remonumented the Williams corner he marked the brass cap corner to T3S, R29E S36 and T3S, R30E, S31 only. I believe this is incorrect. In his notes of the subdivision of T4S, R30E, Deputy Pershin states he was closing on the south line of T3S, R30E which he established in 1879. Calculating the record length of the north line of Section 6 using the parenthetical distances provided on the plat of T4S, R30E results in a length of 77.36 chains. Adding the connection distance shown on that plat between the closing corner of sections 5 and 6 and the standard corner of Sections 31 and 32 of 6.32 chains gives a total of 83.68 chains which is the record length of the south line of Section 31. The plat data confirms that the northwest corner of section 6 was held as common with the southwest corner of section 31 making this corner the common corner to townships T3S, R29E; T3S, R30E and T4S, R30E.

In the process of completing the survey of Township 4 South, Range 29 East, Deputy Sanderson established two new and distinct township corner points. In order to determine the effect these may have had on the original surveys of the other three townships, it was necessary to determine reasonable approximations of the Sanderson township corner points. When searching, I did not find either of the Sanderson remonumentations. This was due partially to the fact that the discrepancies in Mr. Sanderson's record produced a search area more than 600 feet in extent. The corner locations also fall in an area disturbed by rock slides, road construction and rock pit development. To determine the location of Sanderson's northeast corner of Section 1, T4S, R29E, I calculated the point at record bearing and distance north of the 1/4 corner common to Sections 1 and 6, T4S, R29 and 30 East. I determined this to be the only appropriate method for the following reasons: Mr. Sanderson did not make any tie to the township line to the east; at one place in his notes Sanderson reports the location of the range line between T3S, Ranges 29 and 30 as 3.55 chains east of where Pershin's record placed it while at other places in his notes he calls for the corner to T3S, Range 29 and 30 to lie both 3.82 and 5.82 chains west of his corner to Townships 4S, Ranges 29 and 30. (The plat calls for 3.82 chains); A one point control solution is the only instance in this area where Mr. Sanderson's measurement agrees with the lines identified by Williams' and Pershin's monuments; Mr. Sanderson's other measurements to the exterior lines of T4S, R29E appear to have been stubbed and not actually measured; using one point control agrees with the remains of the old fence and results in the only solution that falls in a tailless rockslide which Mr. Sanderson called "float rock" in his notes. Next I calculated a position for Sanderson's southeast corner of Section 36 at 3.82 chains northwesterly from Sanderson's northeast corner of Section 1 and on the line running from Sanderson's northeast corner of Section 1 to the south 1/4 corner of Section 36. Both of Sanderson's township corner points overlap into the original Section 36 of T3S, R29E, which is a school section and, as per Section 5-63 of the 2009 Manual of Instructions, cannot be legally disturbed.

Having determined that the Sanderson township corners have no effect on the boundaries of Section 6, T4S, R30E, I proceeded to subdivide that section in accordance with the 2009 BLM Manual of Instructions. It should be noted that the distance of the west line of Government Lot 4 used to calculate the plat area of lot 4 is 8.00 chains. This distance, if based on the measurement in Sanderson's notes and plat, should have been 7.26 chains. The distance of 8.00 chains is found in the notes as the distance at which Sanderson began to search for Pershin's corner. However, the origin of the distance 8.00 chains is unknown. For more information concerning Sanderson's corner locations and also the structures on Lot 6, Section 6, see the details on this map.

This survey was performed with a Trimble R8S Base / Rover pair. All points measured were tied with redundant observations.

SURVEY FOR Mr. Randy Raschein 32427 Old Highway 34 Tangent, OR 97389		PROJECT DATE: April 7, 2022	
LOCATION: Section 6, T4S, R30E, W.M., Umatilla County, Oregon		Project No. 22-3	SCALE: 1" = 1000'
WITNESS TREE SURVEYING Stephen K. Haddock, PLS, CFedS P.O. Box 6 Pilot Rock, Oregon 97868 (541) 443-2922			

2001